

Uranus DLP VM SIEM MDR IDS

Complete security protection for your business

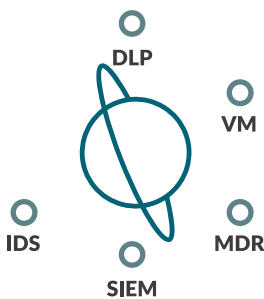
Technology advises, humans decide

Our Security Operations Centre (SOC) solutions deliver unbeatable protection for your business universe through a powerful combination of human and machine. Pairing Gartner-identified SIEM technologies with nearly two decades of cyber security experience, we draw upon information from state-of-the-art tools and enhance it with expert intelligence and analysis. Through this blend we deliver optimum results – identifying and solving security challenges with speed and efficiency.

One of our premium-level SOC offerings, Uranus is a bespoke service that ensures real-time analysis and threat remediation to deliver the ultimate in IT protection.

Uranus

5 protections



Included in this SOC

- Data Leakage Prevention (DLP)
- Vulnerability Management (VM)
- SIEM (Security Information and Event Management)
- Managed Detection and Response (MDR)
- Network Intrusion Prevention System (IDS/IPS)
- Threat Intelligence (GTIN)

Experts on watch

Our managed services provide peace of mind, with a dedicated SOC team on watch 24 hours a day, 365 days a year. A handpicked selection of security analysts, threat intelligence specialists and cyber security engineers combine their expertise to interpret technology insights and action defensive measures on your behalf.

Is Uranus the right SOC for me?

Uranus is a perfect fit for businesses looking for enterprise-level cyber security protection tailored to meet their specific needs. Uranus SOC provides robust protection against cyber security threats that occur both inside and outside of your business. Our suite of leading defensive technologies is configured to strengthen your defences in three important ways:

■ **Proactive defence** – Prevention is better than cure. Our cyber threat intelligence system provides advanced warning of cyber threats targeting your organisation or sector. Coupled with vulnerability management, we stay one step ahead of attacks by hardening your organisational defences.

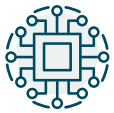
■ **Reactive defence: automated** – The first wall of defence. Industry-leading security tools protect your users and systems in real-time by automatically blocking network and malware threats, and preventing data theft and exfiltration attempts.

■ **Reactive defence: incident response playbooks** – Enhanced threat response. Going one step further than automated tools alone, our analysts interpret insight from threat hunting technology to seek out indicators of compromise in your networks and trigger best-practice incident response processes.

■ In depth: Uranus benefits

- Rapid remote deployment of monitoring and protection software through cloud management.
- Key Risk Indicator and security maturity improvements delivered within 4 weeks of SOC deployment.
- Protect key data, intellectual property and client data from theft and accidental leakage.
- Harden networks and systems to common network intrusion attacks and malware.
- Detect targeted and sophisticated network attacks.
- Help protect against zero-day malware.
- Reduce employee overhead and improve speed of response through automated defence and remediation.
- Faster root-cause analysis via multiple security logs including network, firewall, server, active directory, database and cloud systems.
- Joined up overview of security incidents in the event of a breach – slashing the time it takes to respond.
- Flexibility to evolve your service using our 'Roll Out Roll In' SOC protections.

■ In depth: Uranus protections



Technology

Technology plays a vital role in protecting your IT. Your Uranus SOC service is underpinned by state-of-the-art security tools:

- **DLP software agents and cloud management portal**
 - Stops data exfiltration through policy and risk-based protection.
 - Enables real-time tracking of on premise and mobile users.
- **IPS appliance**
 - Detects and prevents network threats through automation.
 - Identifies malware threats traversing your networks or calling out to botnet servers.
- **MDR software agents and cloud management portal**
 - Protects against advanced malware and network threats through risk-based alerting.
 - Reveals threat actors who already have a foothold on your network.
 - Detects zero-day risks and advanced persistent threats.
- **Vulnerability Scanners virtual appliance**
 - Flags vulnerabilities in your networks, cloud systems and internet facing perimeter, including unknown systems and shadow IT.
 - OWASP Web Application Scanning and Compliance Scanning (includes PCI DSS, SoX, NIST, CIS and many more).
 - Logs emerging threats via a threat intelligence feed.
- **LogSecure SIEM**
 - Monitors all your network and cloud systems to provide a unified view of your security posture.
 - Enhances the capabilities of all your security tools by joining up data to provide a comprehensive picture.
 - Speeds up root-cause analysis and enhances key risk indicator reporting.
- **i3 Security Incident Management Portal**
 - Tracks security alerts and incidents through a centralised portal.
 - Contains security run books tailored to your needs.
 - Shows you the 'metrics that matter' through live security posture and risk indicator dashboards.
- **Global Threat Intelligence Network (GTIN)**
 - Uses a database of current threats, campaigns, botnets and malicious websites to seek out indicators of compromise.



People

Humans are critical to interpreting and acting on technology's advice, which is why they're a huge part of what we do for you. Your Uranus SOC team includes:

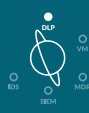
- **Security Engineer:** Ensures your systems seamlessly integrate with ours so everything works as it should.
- **Security Analyst:** Your eyes and ears. Monitors, analyses and investigates your IT estate 24x7.
- **Security Delivery Manager:** Oversees every element of your service from internal response process to coordination of different teams.
- **Security Assurance Consultant:** Answers the difficult questions and provides valuable guidance that supports your decisions.
- **Threat Intelligence Specialist:** Looks beyond your perimeter to seek and stop cyber threats before they cause harm.



Process

We dot the I's and cross the T's by ensuring best-practice processes are meticulously followed during the deployment of our managed security services:

- **On-going tuning of alert and defensive rule sets:**
Ensures your security stays matched to your organisation as it evolves.
- **Early warning threat intelligence:**
Shows you how to best-protect your business before an attack strikes.
- **Active threat hunting:**
Detects sophisticated attackers and advanced persistent threats.
- **Monthly Key Risk Indicator reporting:**
Summarises the risks we've uncovered and prevented, benchmarked against key performance indicators.
- **Incident orchestration:**
Resolves and remediates incidents through collaboration with your in-house teams.



■ Protection overview: DLP

■ What is it?

Data Loss Prevention (DLP) inspects and analyses all the data that is being accessed or transferred within your network. This could be between devices in your organisation, or externally.

DLP policies can be configured to trigger alerts or preventative actions based on:

- The type of information being transferred (e.g. credit card numbers, personal information, data classification markings).
- The source of the information (e.g. sensitive systems, specific end user devices).
- Who is performing the activity (e.g. members of the finance department, Active Directory groups, users who are soon to leave the organisation).
- The destination of the data (e.g. unauthorised email services, file sharing services, instant messenger services).

■ Why do I need it?

DLP solutions provide protection against data leaks and data theft while offering control of portable storage devices. The DLP service can be deployed across all common operating systems, making it ideal for companies running on multi-OS networks.

With a client-server architecture, the agent software runs on user devices no matter their location whilst the DLP policies are managed centrally by the SOC. This means that both office-based and remote users are always protected with up-to-date policies, which are synchronised within seconds.

■ SOC management ■

- **Policy control** – Quickly and easily apply changes to your DLP policies via request to our SOC team – giving you full control without the need to train in-house teams in the technology.
- **Fully managed service** – Our SOC analysts monitor your security alerts 24/7 and can supply ad-hoc reporting upon request.
- **Custom policy building** – We work with you to build a set of policies that matches your organisation's needs and covers industry best practice.

■ Additional DLP features ■

- **Device control** – Lockdown, control, and monitor USB and peripheral ports to stop data theft and data loss.
- **Content aware protection** – Monitor and control data in motion, deciding which confidential files are permitted to leave the company. Filters can be set by file type, application, content, Regex and more.
- **Enforced encryption** – Automatically secure data copied on USB storage devices with AES 256bit encryption. Cross-platform, password-based, easy to use and highly efficient.
- **eDiscovery** – Scan data at rest on network endpoints and apply remediation actions such as encrypt or delete if confidential data is identified on unauthorised computers.



■ Protection overview: VM

■ What is it?

Vulnerability Management (VM) enables your organisation to identify security weaknesses before they become a problem. Our always-on virtual scanners monitor your networks, cloud systems and internet facing perimeter to identify potential risks, flagging them to our SOC team who can then take further action.

■ Why do I need it?

VM helps you take control of your IT and cloud networks, bolstering them to the highest industry standards. Network and host discovery identify any systems connected to your network that you might not be aware of, such as legacy systems or shadow IT. You can then take control of these assets or decide to decommission them – lowering your overall risk while improving your level of security maturity.

Many cyber-attacks publicised in the media have been due to unpatched or poorly configured systems. VM is a key baseline security measure which increases your organisation's resilience to cyber-attacks.

■ SOC management ■

- **Policy management** – We customise and maintain your vulnerability scan policies to meet your organisation's needs. Our experienced team set up automated scanning schedules, reducing operational overhead on your business systems and networks.
- **Fully managed service** – Our SOC analysts provide scanning reports on agreed schedules and will also trigger ad-hoc scans as requested, or if our threat intelligence uncovers a new critical vulnerability on your networks.

■ Additional VM features ■

- **Compliance scanning** – Includes OWASP Web Application Scanning and Compliance Scanning (includes PCI DSS, SoX, NIST, CIS and many more).
- **Threat Intelligence feed** – Discloses new vulnerabilities and emerging threats.
- **Optional vulnerability scanning agents** – Provides real-time scanning and continuous host-based scanning, useful for vulnerability management of mobile endpoints.



■ Protection overview: MDR

■ What is it?

MDR (Managed Detection and Response) delivers real-time detection and prevention of advanced network threats and malware. Using a combination of machine learning, signature detection and threat intelligence, MDR will identify anomalous activity on endpoint systems and will automatically block and quarantine high risk events. Low risk events are also flagged to the SOC team for further investigation.

■ Why do I need it?

MDR goes beyond even the best of anti-virus products. Rather than defending only against known threats, MDR allows a SOC team to actively hunt for zero-day cyber attacks and Advanced Persistent Threats. MDR is the ideal technology for organisations who are concerned about advanced threats and malware - it ensures that attackers can't gain a foothold on your networks and keeps your business off hackers' radar.

■ SOC management ■

- **Management of alert and defensive rules** – We continuously tune alert rulesets in response to your business needs and the threat landscape. Automated incident response playbooks mean defensive action is triggered as soon as threats are detected.
- **Active threat hunting** – Ongoing threat hunting combines machine intelligence with skilled human analysis and decision-making.
- **Advanced incident analytics** – Includes malware sandboxing and analysis of zero-day malware threats.
- **Cyber threat intelligence** – We monitor the internet and hacker forums for indicators of compromise, leaked data, targeted campaigns and fraudulent web domains – so we're always a step ahead.

■ Additional MDR features ■

- **Lightweight MDR agent** – Protects servers and cloud workloads, and can be rapidly deployed to desktops and laptops.
- **Control endpoint connectivity** – including Bluetooth and USB devices.
- **Defensive play books** – Can either be automated or support a 1-click response.
- **Threat Hunter toolkit** – Supports MITRE ATT&CK tactics, techniques and procedures.



■ Protection overview: SIEM

■ What is it?

SIEM (Security Information and Event Management) brings together all your security technologies into a single pane of glass. Logs are correlated from operating systems, cloud systems and bespoke applications, providing you with a holistic overview of your security estate.

Alerts generated by the SIEM are sent to the i3 security incident management and response platform which is monitored by our expert SOC team in real-time. This enables them to quickly and effectively respond to alerts from multiple systems, all from one control centre.

■ Why do I need it?

Most organisations have multiple security technologies in place to defend their networks. These work hard to block attacks in real-time, but with each sitting in its own corner of the network it can be a significant task for IT admins to manage siloed information. Correlating security event logs via a SIEM means that in the event of attack you have a joined-up view of its proliferation, so the right course of action can be taken without delay.

Should a high-priority security incident occur we'll immediately notify appropriate personnel and resolver teams, briefing them on the nature of the attack and the containment and mitigation actions required. Drawing on log data evidence from our SIEM to support the incident resolution process, we can work with (or take the role of) your Cyber Incident Response Team (CIRT). Crucially, the SIEM service accelerates root-cause analysis by searching through billions of log messages in a matter of minutes.

Our SOC analysts also have access to integrated run-books. Tailored for each security alert use-case, these outline pre-agreed security processes so we'll know exactly which defensive actions to trigger and when – quarantining a workstation, locking a user account or notifying relevant personnel in your organisation.



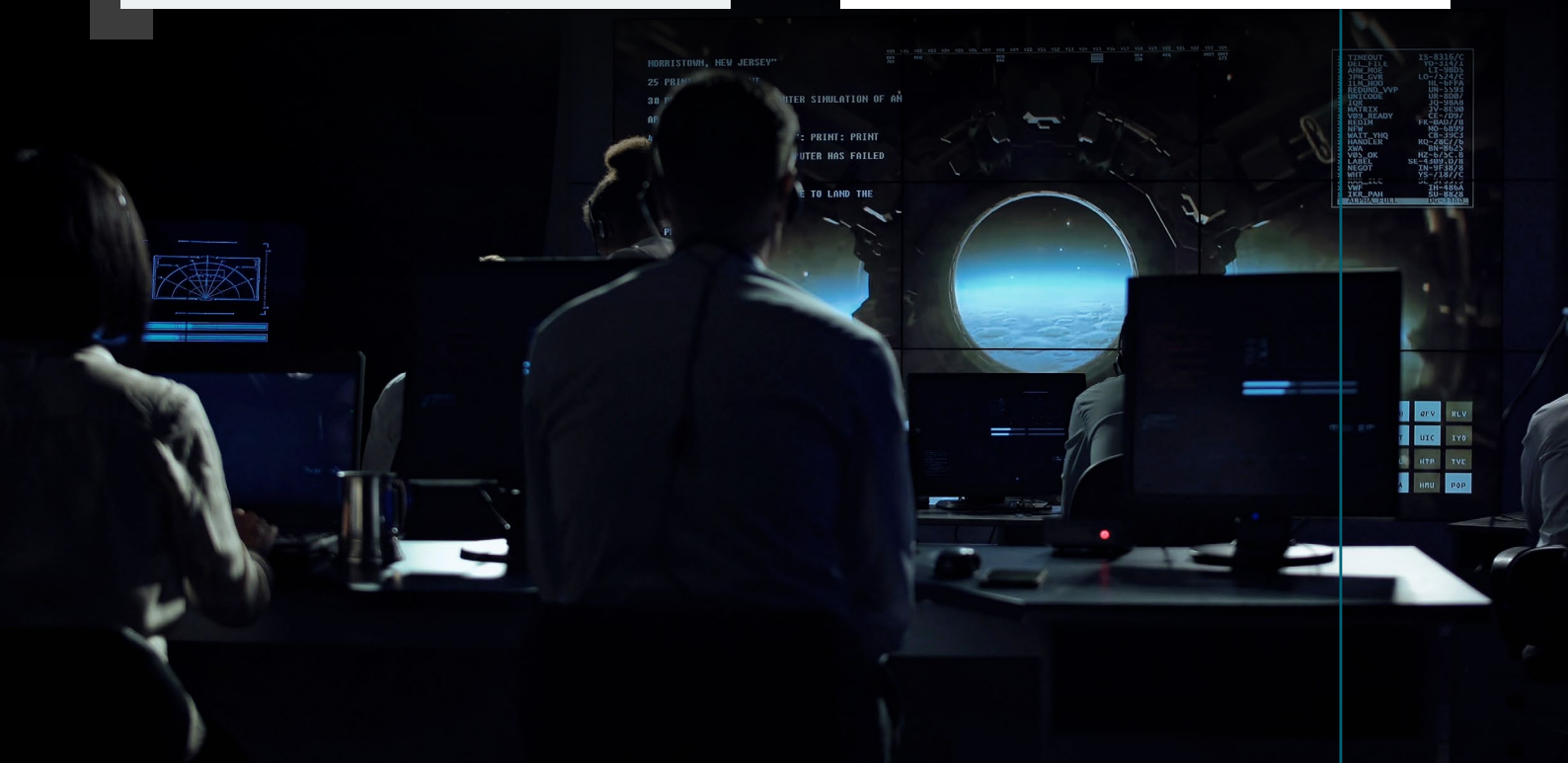


SOC management

- **Alert use-cases** – Starting with a baseline security alerting ruleset, we evolve this over time to implement new alerts as required.
- **Fully managed service** – Our SOC analysts monitor your security alerts 24/7 and can supply ad-hoc reporting upon request.
- **Evolving service** – We continually adapt our monitoring and alerting methods to match the ever-changing threat landscape. Our SOC team are up-to-date with the latest threat trends and keep watch for new techniques, tactics and procedures being deployed by cyber attackers.
- **Scalable Capacity** – We can flex your SIEM service capacity to match your security needs.
- **Bespoke Integrations** – We work with your custom business applications, rather than relying on pre-existing modules to integrate data feeds.

Reporting

- **Key Risk Indicator reports (KRI)** – Weekly or monthly KRI reports provide a full picture of your security monitoring service. These highlight the most important risks, whilst providing insight into recent threats and the steps taken to defend against them.
- **Key Performance Indicators (KPI)** – We benchmark our performance by tracking incident response and resolution times.
- **i3 access** – All customers have access to our i3 incident management portal granting real-time visibility into how our analysts are investigating and responding to security incidents.
- **Flexible alert notifications** – When our analysts identify a threat, they'll notify you via your chosen method – through email, in the i3 portal, by telephone or through integrations with other incident management platforms.



TELECOM	12-8216/C
UNIT - P1.R	70-219/1
UNIT - P2.R	17-289/2
UNIT - P3.R	10-264/3
UNIT - P4.R	08-219/4
UNIT - P5.R	01-219/5
UNIT - P6.R	01-219/6
UNIT - P7.R	01-219/7
UNIT - P8.R	01-219/8
UNIT - P9.R	01-219/9
UNIT - P10.R	01-219/10
UNIT - P11.R	01-219/11
UNIT - P12.R	01-219/12
UNIT - P13.R	01-219/13
UNIT - P14.R	01-219/14
UNIT - P15.R	01-219/15
UNIT - P16.R	01-219/16
UNIT - P17.R	01-219/17
UNIT - P18.R	01-219/18
UNIT - P19.R	01-219/19
UNIT - P20.R	01-219/20
UNIT - P21.R	01-219/21
UNIT - P22.R	01-219/22
UNIT - P23.R	01-219/23
UNIT - P24.R	01-219/24
UNIT - P25.R	01-219/25
UNIT - P26.R	01-219/26
UNIT - P27.R	01-219/27
UNIT - P28.R	01-219/28
UNIT - P29.R	01-219/29
UNIT - P30.R	01-219/30
UNIT - P31.R	01-219/31
UNIT - P32.R	01-219/32
UNIT - P33.R	01-219/33
UNIT - P34.R	01-219/34
UNIT - P35.R	01-219/35
UNIT - P36.R	01-219/36
UNIT - P37.R	01-219/37
UNIT - P38.R	01-219/38
UNIT - P39.R	01-219/39
UNIT - P40.R	01-219/40
UNIT - P41.R	01-219/41
UNIT - P42.R	01-219/42
UNIT - P43.R	01-219/43
UNIT - P44.R	01-219/44
UNIT - P45.R	01-219/45
UNIT - P46.R	01-219/46
UNIT - P47.R	01-219/47
UNIT - P48.R	01-219/48
UNIT - P49.R	01-219/49
UNIT - P50.R	01-219/50
UNIT - P51.R	01-219/51
UNIT - P52.R	01-219/52
UNIT - P53.R	01-219/53
UNIT - P54.R	01-219/54
UNIT - P55.R	01-219/55
UNIT - P56.R	01-219/56
UNIT - P57.R	01-219/57
UNIT - P58.R	01-219/58
UNIT - P59.R	01-219/59
UNIT - P60.R	01-219/60
UNIT - P61.R	01-219/61
UNIT - P62.R	01-219/62
UNIT - P63.R	01-219/63
UNIT - P64.R	01-219/64
UNIT - P65.R	01-219/65
UNIT - P66.R	01-219/66
UNIT - P67.R	01-219/67
UNIT - P68.R	01-219/68
UNIT - P69.R	01-219/69
UNIT - P70.R	01-219/70
UNIT - P71.R	01-219/71
UNIT - P72.R	01-219/72
UNIT - P73.R	01-219/73
UNIT - P74.R	01-219/74
UNIT - P75.R	01-219/75
UNIT - P76.R	01-219/76
UNIT - P77.R	01-219/77
UNIT - P78.R	01-219/78
UNIT - P79.R	01-219/79
UNIT - P80.R	01-219/80
UNIT - P81.R	01-219/81
UNIT - P82.R	01-219/82
UNIT - P83.R	01-219/83
UNIT - P84.R	01-219/84
UNIT - P85.R	01-219/85
UNIT - P86.R	01-219/86
UNIT - P87.R	01-219/87
UNIT - P88.R	01-219/88
UNIT - P89.R	01-219/89
UNIT - P90.R	01-219/90
UNIT - P91.R	01-219/91
UNIT - P92.R	01-219/92
UNIT - P93.R	01-219/93
UNIT - P94.R	01-219/94
UNIT - P95.R	01-219/95
UNIT - P96.R	01-219/96
UNIT - P97.R	01-219/97
UNIT - P98.R	01-219/98
UNIT - P99.R	01-219/99
UNIT - P100.R	01-219/100

■ Protection overview: IDS/IPS

■ What is it?

Intrusion Detection and Prevention Systems (IDS/IPS) are technologies that perform real-time automated detection and defence against threats – scrutinising your network for malware risks, botnet call outs, network scanning, vulnerability exploits and other cyber risks.

■ Why do I need it?

Businesses face an ongoing threat from cyber attackers who are looking to get a foothold on the network.

These attackers may attempt to compromise your network using methods such as zero-day exploits, tricking end users into connecting to malicious infrastructure or deploying obfuscation methods to hide attacks. IPS will help to block this activity, providing an extra layer of security for your organisation.

■ SOC management ■

- **IDS/IPS policy** – We tune your policy ruleset to match your organisation's needs and align with the way your users and systems operate.
- **IDS/IPS rule updates** – Our SOC team manage and implement new IPS signatures so your technology is always up-to-date. Careful tuning of these signatures also helps to reduce false positives.
- **Fully managed service** – Our SOC analysts monitor your security alerts 24/7 and can supply ad-hoc reporting upon request.

Our customer pledge

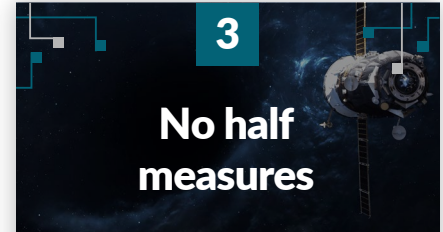
We want you to be completely satisfied with your SOC service – our promise to you:



Put us to the test and let us run your 24x7 Security Operations for free for the first 3 months. You can benchmark our performance against pre-agreed success criteria – and if you're not convinced after the pilot, it won't cost you a penny.



Our mission is to make high-quality, tailored managed security services affordable to the mid-market – and we stand by our word. If you find another provider who can offer a like-for-like SOC service for lower cost, we will refund the difference.



When you take part in our pilot you can expect the full Zepko service, not a trimmed down version. We'll run a full 24x7 SOC operation, providing access to our specialist SOC team, process models and procedures, at the same level as our existing customers.

Take the next step

Found the right SOC for you? Get in touch with us to start your 3-month pilot or for more information about our services.

+44 (0) 845 074 0790 | info@zepko.com

Get in touch

The Zepko logo, consisting of a stylized 'z' made of two red squares followed by the word 'zepko' in a bold, lowercase, sans-serif font.